

OFFICE FURNITURE



Government Seating Reference CUA FWE2024





Arteil Furniture are manufacturers of quality office chairs, located in O'Connor WA.

Established in 1977, Arteil has supplied the WA Government since 1983.

Our showroom is located at 4/95 Garling St, O'Connor, WA 6163, where all chairs are on display for trial. No appointment is necessary.

Opening hours are Mon-Thurs 8:30am-4:30pm and Fri 8:30am-2:30pm.

Orders can be placed by email or online at www.arteil.com.au.

All chairs are covered by a 5 year manufacturer's warranty.

4/95 Garling Street, O'Connor, Western Australia 6163
T: (08) 9337 8399

Email: sales@arteil.com.au Website: www.arteil.com.au
Mon-Thurs: 8:30am-4:30pm Fri: 8:30am-2:30pm





GMK1 - GRYPHON MK1
 Duomatic Mechanism - 3 Levers
 No Arms
 Adjustable Arms

GMK3 - GRYPHON MK3
 Duomatic Mechanism - 3 Levers
 No Arms
 Adjustable Arms

SMK1 - SAPPHIRE MK1
 Duomatic Mechanism - 3 Levers
 No Arms
 Adjustable Arms

SMK3 - SAPPHIRE MK3 PB
 Duomatic Mechanism - 3 Levers
 No Arms
 Adjustable Arms

MODEL	OVERALL WIDTH mm	BACK WIDTH mm	BACK HEIGHT mm	SEAT HEIGHT mm	SEAT SIZE in mm			ASHCROFT FABRIC	PACIFICA VINYL
					SMALL	MEDIUM	LARGE		
GMK1 - GRYPHON MK1	510	470	530	470-600	460 D x 510 W	490 D x 510 W	510 D x 510 W	<input checked="" type="checkbox"/>	<input checked="" type="checkbox"/>
GMK3 - GRYPHON MK3	510	460	430	470-600	460 D x 510 W	490 D x 510 W	510 D x 510 W	<input checked="" type="checkbox"/>	<input checked="" type="checkbox"/>
SMK1 - SAPPHIRE MK1	510	470	520	470-600	460 D x 510 W	490 D x 510 W	510 D x 510 W	<input checked="" type="checkbox"/>	<input checked="" type="checkbox"/>
SMK3 - SAPPHIRE MK3 PB	510	415	380	470-600	460 D x 510 W	490 D x 510 W	510 D x 510 W	<input checked="" type="checkbox"/>	<input checked="" type="checkbox"/>

4/95 Garling Street, O'Connor, Western Australia 6163
 T: (08) 9337 8399

Email: sales@arteil.com.au Website: www.arteil.com.au
 Mon-Thurs: 8:30am-4:30pm Fri: 8:30am-2:30pm
 All prices are GST inclusive.





**GMK1HD - GRYPHON MK1
HEAVY DUTY**

HD Tiltamatic Mechanism
- 3 Levers
Polished Base
No Arms
Adjustable Arms



**SMK1HD - SAPPHIRE MK1
HEAVY DUTY**

HD Tiltamatic Mechanism - 3 Levers
Polished Base
No Arms
Adjustable Arms



KMK1 - KARIS MK1

Duomatic Mechanism - 3 Levers
No Arms
Adjustable Arms



KMK3 - KARIS MK3

Duomatic Mechanism - 3 Levers
No Arms
Adjustable Arms

MODEL	OVERALL WIDTH mm	BACK WIDTH mm	BACK HEIGHT mm	SEAT HEIGHT mm	SEAT SIZE in mm			ASHCROFT FABRIC	PACIFICA VINYL
					SMALL	MEDIUM	LARGE		
GMK1HD - GRYPHON MK1 HEAVY DUTY	510	470	530	460-550	460 D x 510 W	490 D x 510 W	510 D x 510 W	<input checked="" type="checkbox"/>	<input checked="" type="checkbox"/>
SMK1HD - SAPPHIRE MK1 HEAVY DUTY	510	470	520	460-550	460 D x 510 W	490 D x 510 W	510 D x 510 W	<input checked="" type="checkbox"/>	<input checked="" type="checkbox"/>
KMK1 - KARIS MK1	520	480	550	480-610	-	470 D x 500 W	490 D x 540 W	<input checked="" type="checkbox"/>	<input checked="" type="checkbox"/>
KMK3 - KARIS MK3	520	480	490	480-610	-	470 D x 500 W	490 D x 540 W	<input checked="" type="checkbox"/>	<input checked="" type="checkbox"/>

4/95 Garling Street, O'Connor, Western Australia 6163

T: (08) 9337 8399

Email: sales@arteil.com.au Website: www.arteil.com.au

Mon-Thurs: 8:30am-4:30pm Fri: 8:30am-2:30pm

All prices are GST inclusive.





SHBE - SAPPHIRE HIGH BACK EXECUTIVE CHAIR

Tiltomatic Mechanism - 5 Levers
No Arms
Adjustable Arms



SWLB - SAPPHIRE WIDE LOWBACK

HD Tiltomatic Mechanism
- 3 Levers
Polished Aluminium Base
No Arms
Chrome Adjustable Arms



SMK1PB - SAPPHIRE MK1 PB

Duomatic Mechanism - 3 Levers
No Arms
Adjustable Arms

MODEL	OVERALL WIDTH mm	BACK WIDTH mm	BACK HEIGHT mm	SEAT HEIGHT mm	SEAT SIZE in mm			ASHCROFT FABRIC	PACIFICA VINYL
					SMALL	MEDIUM	LARGE		
SHBE - SAPPHIRE HIGH BACK EXECUTIVE	640	520	680	450-540	510 D x 520 W	-	550 D x 520 W	<input checked="" type="checkbox"/>	<input checked="" type="checkbox"/>
SWLB - SAPPHIRE WIDE LOWBACK	620	620	530	490-620	510 D x 620 W	-	550 D x 620 W	<input checked="" type="checkbox"/>	<input checked="" type="checkbox"/>
SMK1PB - SAPPHIRE MK1 PB	510	520	590	470-600	460 D x 510 W	490 D x 510 W	510 D x 510 W	<input checked="" type="checkbox"/>	<input checked="" type="checkbox"/>

4/95 Garling Street, O'Connor, Western Australia 6163

T: (08) 9337 8399

Email: sales@arteil.com.au Website: www.arteil.com.au

Mon-Thurs: 8:30am-4:30pm Fri: 8:30am-2:30pm

All prices are GST inclusive.





SME - SYNCHRO MESH EXECUTIVE CHAIR

Synchro Mechanism - 5 adjustments
Removable Arms
Removable Headrest
Polished Aluminium Base



STHBE - STERLING HIGH BACK EXECUTIVE CHAIR

Synchro Tilt Mechanism
Black Leather



ZHBEC - ZEPHYR HIGH BACK EXECUTIVE CHAIR

Synchro Tilt Mechanism
Fixed Arms
Black Leather



AMBMC - ALPINE MEDIUM BACK MESH CHAIR

Synchro Tilt Mechanism - 4 Positions
Upholstered Seat - Black only
No Arms
Adjustable Arms

MODEL	OVERALL WIDTH mm	BACK WIDTH mm	BACK HEIGHT mm	SEAT WIDTH mm	SEAT DEPTH mm	SEAT HEIGHT mm	UPHOLSTERY
SME - SYNCHRO MESH EXECUTIVE CHAIR	670	520	580	530	500	460-560	Seat - Black Fabric
STHBE - STERLING HIGH BACK EXECUTIVE	680	490	750	540	500	480-550	Black Leather
ZHBEC - ZEPHYR HIGH BACK EXECUTIVE CHAIR	595	510	700	520	470	480-550	Black Leather
AMBMC - ALPINE MEDIUM BACK MESH CHAIR	640	490	560	490	480	450-555	Seat - Black Fabric

4/95 Garling Street, O'Connor, Western Australia 6163

T: (08) 9337 8399

Email: sales@arteil.com.au Website: www.arteil.com.au

Mon-Thurs: 8:30am-4:30pm Fri: 8:30am-2:30pm

All prices are GST inclusive.





DMK1 - DENVER MK1
 Duomatic Mechanism - 3 Levers
 No Arms
 Adjustable Arms

DMK3 - DENVER MK3
 Duomatic Mechanism - 3 Levers
 No Arms
 Adjustable Arms

DMK5 - DENVER MK5 STOOL
 Duomatic Mechanism - 3 Levers
 No Arms
 Adjustable Arms

MODEL	OVERALL WIDTH mm	BACK WIDTH mm	BACK HEIGHT mm	SEAT HEIGHT mm	SEAT SIZE in mm			ASHCROFT FABRIC	PACIFICA VINYL
					SMALL	MEDIUM	LARGE		
DMK1 - DENVER MK1	510	440	500	460-590	-	470 D x 500 W	490 D x 540 W	<input checked="" type="checkbox"/>	<input checked="" type="checkbox"/>
DMK3 - DENVER MK3	510	420	400	470-610	-	470 D x 500 W	490 D x 540 W	<input checked="" type="checkbox"/>	<input checked="" type="checkbox"/>
DMK5 - DENVER MK5 STOOL	510	420	400	640-910	-	470 D x 500 W	490 D x 540 W	<input checked="" type="checkbox"/>	<input checked="" type="checkbox"/>



**GMK4 - GRYPHON MK4
DRAFTING STOOL**

Duomatic Mechanism - 3 Levers
Adjustable Footring
200mm or 260mm Gaslift
No Arms
Adjustable Arms



**SMK4 - SAPPHIRE MK4 PB
DRAFTING STOOL**

Duomatic Mechanism - 3 Levers
Adjustable Footring
200mm or 260mm Gaslift
No Arms
Adjustable Arms



**KMK4 - KARIS MK4 DRAFTING
STOOL**

Duomatic Mechanism - 3 Levers
Adjustable Footring
200mm or 260mm Gaslift
No Arms
Adjustable Arms

MODEL	OVERALL WIDTH mm	BACK WIDTH mm	BACK HEIGHT mm	SEAT HEIGHT mm	SEAT SIZE in mm			ASHCROFT FABRIC	PACIFICA VINYL
					SMALL	MEDIUM	LARGE		
GMK4 - GRYPHON MK4 DRAFTING STOOL	510	460	430	640-890	460 D x 510 W	490 D x 510 W	510 D x 510 W	<input checked="" type="checkbox"/>	<input checked="" type="checkbox"/>
SMK4 - SAPPHIRE MK4 DRAFTING STOOL	510	415	380	640-890	460 D x 510 W	490 D x 510 W	510 D x 510 W	<input checked="" type="checkbox"/>	<input checked="" type="checkbox"/>
KMK4 - KARIS MK4 DRAFTING STOOL	520	480	490	640-890	-	470 D x 500 W	490 D x 540 W	<input checked="" type="checkbox"/>	<input checked="" type="checkbox"/>

4/95 Garling Street, O'Connor, Western Australia 6163

T: (08) 9337 8399

Email: sales@arteil.com.au Website: www.arteil.com.au

Mon-Thurs: 8:30am-4:30pm Fri: 8:30am-2:30pm

All prices are GST inclusive.





AMBVC - ALPINE MESH BACK VISITOR CHAIR

Visitor/Conference Chair with Arms
Mesh Back
Upholstered Seat



LCC - LOTUS CAFÉ CHAIR

Indoor Café chairs
Stackable and Linkable
Green, Blue, Red, White, Black



ST1 - SIT AND STAND STOOL

Swivel Stool with Adjustable Height
Polished Aluminium Base

MODEL	OVERALL WIDTH mm	BACK WIDTH mm	BACK HEIGHT mm	SEAT WIDTH mm	SEAT DEPTH mm	SEAT HEIGHT mm	ASHCROFT FABRIC	PACIFICA VINYL
AMBVC - ALPINE MESH BACK VISITOR CHAIR	595	470	490	490	500	460	<input checked="" type="checkbox"/>	<input checked="" type="checkbox"/>
LCC - LOTUS CAFÉ CHAIR	560	450	430	450	430	440	Green, Blue, Red, White, Black	
ST1 - SIT AND STAND STOOL	480	-	-	360	360	560-730	<input checked="" type="checkbox"/>	<input checked="" type="checkbox"/>

4/95 Garling Street, O'Connor, Western Australia 6163

T: (08) 9337 8399

Email: sales@arteil.com.au Website: www.arteil.com.au

Mon-Thurs: 8:30am-4:30pm Fri: 8:30am-2:30pm

All prices are GST inclusive.



**LVM1 - LEGEND VISITOR
MODEL 1**

Visitor Chair
No Arms
Stackable



**LVM2 - LEGEND VISITOR
MODEL 2**

Visitor Chair
Armrests
Stackable



**SSM1 - SAPPHIRE SEMINAR
MODEL 1**

Visitor/Conference Chair
Heavy Duty
Stackable
No Arms



**SSM4 - SAPPHIRE SEMINAR
MODEL 4**

Visitor/Conference Chair
Heavy Duty
Stackable
No Arms
Contour Arms

MODEL	OVERALL WIDTH mm	BACK WIDTH mm	BACK HEIGHT mm	SEAT WIDTH mm	SEAT DEPTH mm	SEAT HEIGHT mm	ASHCROFT FABRIC	PACIFICA VINYL
LVM1 - LEGEND VISITOR MODEL 1	520	440	360	450	480	460	<input checked="" type="checkbox"/>	<input checked="" type="checkbox"/>
LVM2 - LEGEND VISITOR MODEL 2	610	440	360	450	480	460	<input checked="" type="checkbox"/>	<input checked="" type="checkbox"/>
SSM1 - SAPPHIRE SEMINAR MODEL 1	510	475	500	475	460	455	<input checked="" type="checkbox"/>	<input checked="" type="checkbox"/>
SSM4 - SAPPHIRE SEMINAR MODEL 4	630	475	500	475	460	455	<input checked="" type="checkbox"/>	<input checked="" type="checkbox"/>

4/95 Garling Street, O'Connor, Western Australia 6163

T: (08) 9337 8399

Email: sales@arteil.com.au Website: www.arteil.com.au

Mon-Thurs: 8:30am-4:30pm Fri: 8:30am-2:30pm

All prices are GST inclusive.





VHBMC - VIX MESH CHAIR

Synchro Tilt
Headrest
Adjustable Arms



RLMBC - RIO LOWBACK MESH CHAIR

Duomatic 3 levers
Ratchet Back
Height Adjustment
No Arms
Adjustable Arms



RHBMC - RIO HIGHBACK MESH CHAIR

Duomatic 3 levers
Ratchet Back
Height Adjustment
No Arms
Adjustable Arms



HHBMC - HINO HIGHBACK MESH CHAIR

Duomatic 3 levers
Ratchet Back
Height Adjustment
No Arms
Adjustable Arms

MODEL	OVERALL WIDTH mm	BACK WIDTH mm	BACK HEIGHT mm	SEAT HEIGHT mm	SEAT SIZE in mm			UPHOLSTERY
					SMALL	MEDIUM	LARGE	
VHBMC - VIX MESH CHAIR	650	450	580	480	-	480 D x 490 W Seat Height - 470-560	-	Black Fabric
RLMBC - RIO LOWBACK MESH CHAIR	500	450	450	450-590	-	470 D x 500 W	-	Black Fabric
RHBMC - RIO HIGHBACK MESH CHAIR	500	450	530	450-590	-	470 D x 500 W	-	Black Fabric
HHBMC - HINO HIGHBACK MESH CHAIR	550	450	530	550-610	-	-	510 D X 550 W	Black Fabric

4/95 Garling Street, O'Connor, Western Australia 6163

T: (08) 9337 8399

Email: sales@arteil.com.au Website: www.arteil.com.au

Mon-Thurs: 8:30am-4:30pm Fri: 8:30am-2:30pm

All prices are GST inclusive.





AVA2 - AVA BEAM - 2 SEATER

Available with armrests at each end

- No arms
- Arms
- Tables

AVA3 - AVA BEAM - 3 SEATER

Available with armrests at each end

- No arms
- Arms
- Tables

AVA4 - AVA BEAM - 4 SEATER

Available with armrests at each end

- No arms
- Arms
- Tables

MODEL	OVERALL WIDTH mm	BACK WIDTH mm	BACK HEIGHT mm	SEAT WIDTH mm	SEAT DEPTH mm	SEAT HEIGHT mm	ASHCROFT FABRIC	PACIFICA VINYL
AVA2 - AVA BEAM - 2 SEATER	1130	490	500	490	500	460	<input checked="" type="checkbox"/>	<input checked="" type="checkbox"/>
AVA3 - AVA BEAM - 3 SEATER	1680	490	500	490	500	460	<input checked="" type="checkbox"/>	<input checked="" type="checkbox"/>
AVA4 - AVA BEAM - 4 SEATER	2210	490	500	490	500	460	<input checked="" type="checkbox"/>	<input checked="" type="checkbox"/>

4/95 Garling Street, O'Connor, Western Australia 6163

T: (08) 9337 8399

Email: sales@arteil.com.au Website: www.arteil.com.au

Mon-Thurs: 8:30am-4:30pm Fri: 8:30am-2:30pm

All prices are GST inclusive.





**E1200CT- ELEVATE 1200
SIT STAND ELECTRIC DESK**

Desk top colours –
Virginia Walnut or Warm White
Desk frame colours – Black or White
1200mm W x 800mm D
Includes Cable Management Tray
Optional add-ons – Modesty Panel,
Power Board



**E1500CT - ELEVATE 1500
SIT STAND ELECTRIC DESK**

Desk top colours –
Virginia Walnut or Warm White
Desk frame colours – Black or White
1500mm W x 800mm D
Includes Cable Management Tray
Optional add-ons – Modesty Panel,
Power Board



**E1800CT - ELEVATE 1800
SIT STAND ELECTRIC DESK**

Desk top colours –
Virginia Walnut or Warm White
Desk frame colours – Black or White
1800mm W x 800mm D
Includes Cable Management Tray
Optional add-ons – Modesty Panel,
Power Board

4/95 Garling Street, O'Connor, Western Australia 6163

T: (08) 9337 8399

Email: sales@arteil.com.au Website: www.arteil.com.au

Mon-Thurs: 8:30am-4:30pm Fri: 8:30am-2:30pm

All prices are GST inclusive.



**ELSHAPECT - ELEVATE L SHAPE
SIT STAND ELECTRIC DESK**

Desk top colours –
Virginia Walnut or Warm White
Desk frame colours – Black or White
Desktop Size: 1800mm x 750mm –
1800mm x 750mm
Includes Cable Management Tray
Optional add-ons – Modesty Panel,
Power Board



**EB2B1500CT - ELEVATE
BACK TO BACK
ELECTRIC DESK**

Desk top colours –
Virginia Walnut or Warm White
Desk frame colours – Black or White
1500mm x 800mm Screen
Includes Cable Management Tray



**EMP - ELEVATE
MOBILE PEDESTAL**

Colours -
Virginia Walnut or Warm White (shown)

4/95 Garling Street, O'Connor, Western Australia 6163

T: (08) 9337 8399

Email: sales@arteil.com.au Website: www.arteil.com.au

Mon-Thurs: 8:30am-4:30pm Fri: 8:30am-2:30pm

All prices are GST inclusive.

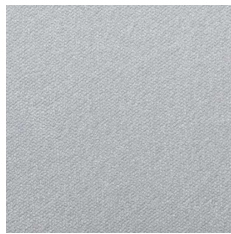


**GMA1 - GLADIUS
SINGLE MONITOR ARM**



**GMA2 - GLADIUS
DUAL MONITOR ARM**

COLOUR SWATCHES - Warwick Ashcroft Fabrics



Silver



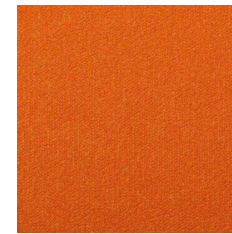
Gunmetal



Onyx



Red



Orange



Canary



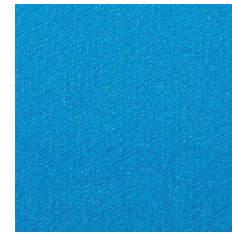
Grass



Kiwi



Teal



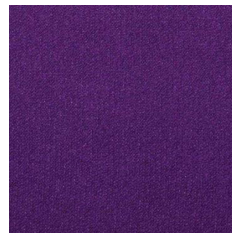
Turquoise



Ocean



Cloud



Purple



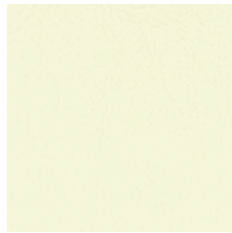
Pink

* Please note the colours are a guide only and can vary to the true colour.

COLOUR SWATCHES - Pacifica Vinyl Colours



White Cap



Vanilla Cream



Ocean Beach



Pearl



Caterpillar



Tropic Lime



Cool Aloe



Sea Spray



Kale



Jungle Vine



Gold Shimmer



Caramel



Fijian Sunset



Cumquat



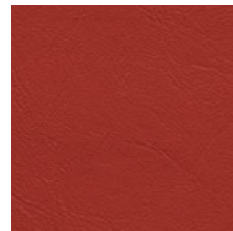
Sunglow



Lemon Chiffon



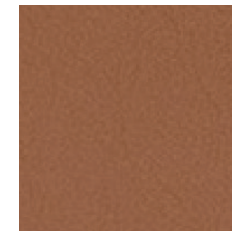
Fire Engine



Volcano



Tawny



Russet



Spring Bud

* Please note the colours are a guide only and can vary to the true colour.

4/95 Garling Street, O'Connor, Western Australia 6163

T: (08) 9337 8399

Email: sales@arteil.com.au Website: www.arteil.com.au

Mon-Thurs: 8:30am-4:30pm Fri: 8:30am-2:30pm

All prices are GST inclusive.

COLOUR SWATCHES - Pacifica Vinyl Colours



Seal Rock



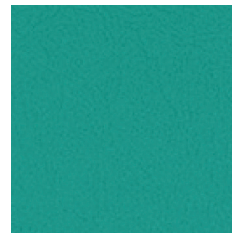
Bubblegum



Oriental Lily



Robin Egg



Peacock



Blue Lagoon



Purple Passion



Dolphin



Copra



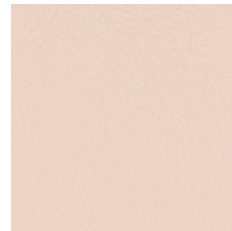
Ice Blue



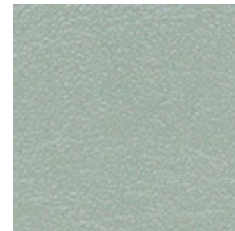
Blue Sail



Astral



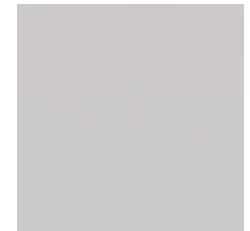
Plxie Dust



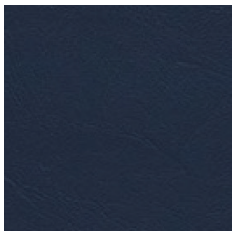
Silver Spoon



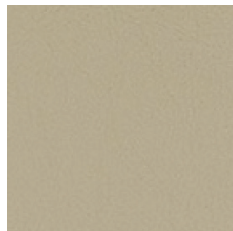
Marina



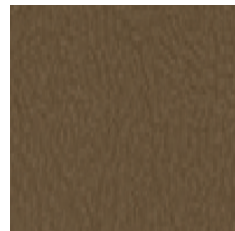
Shell



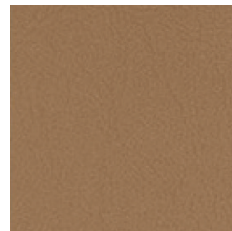
Galaxy



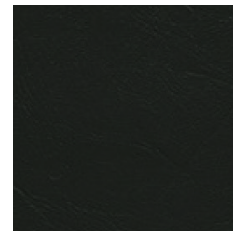
Seabed



Brazil Nut



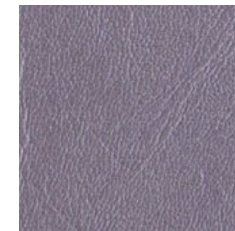
Antelope



Night Sky



Canary



Purple Frost

* Please note the colours are a guide only and can vary to the true colour.

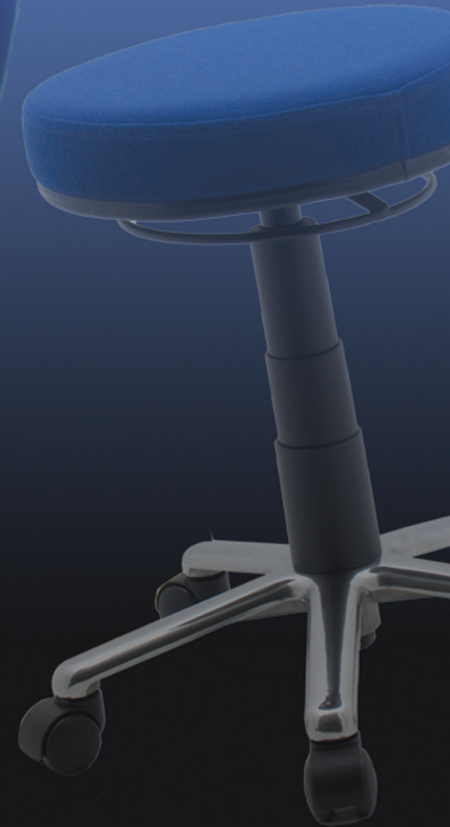
4/95 Garling Street, O'Connor, Western Australia 6163

T: (08) 9337 8399

Email: sales@arteil.com.au Website: www.arteil.com.au

Mon-Thurs: 8:30am-4:30pm Fri: 8:30am-2:30pm

All prices are GST inclusive.



4/95 Garling Street, O'Connor, Western Australia 6163
T: (08) 9337 8399

Email: sales@arteil.com.au Website: www.arteil.com.au
Mon-Thurs: 8:30am-4:30pm Fri: 8:30am-2:30pm

